

A long-exposure photograph of a city highway at night. The foreground shows multiple lanes of traffic with light trails from cars, appearing as streaks of white, yellow, and red. The highway curves into the distance. In the background, a city skyline is visible against a dark blue twilight sky, with several tall skyscrapers illuminated with lights. The overall scene conveys a sense of urban activity and modern infrastructure.

Everfuel Farm

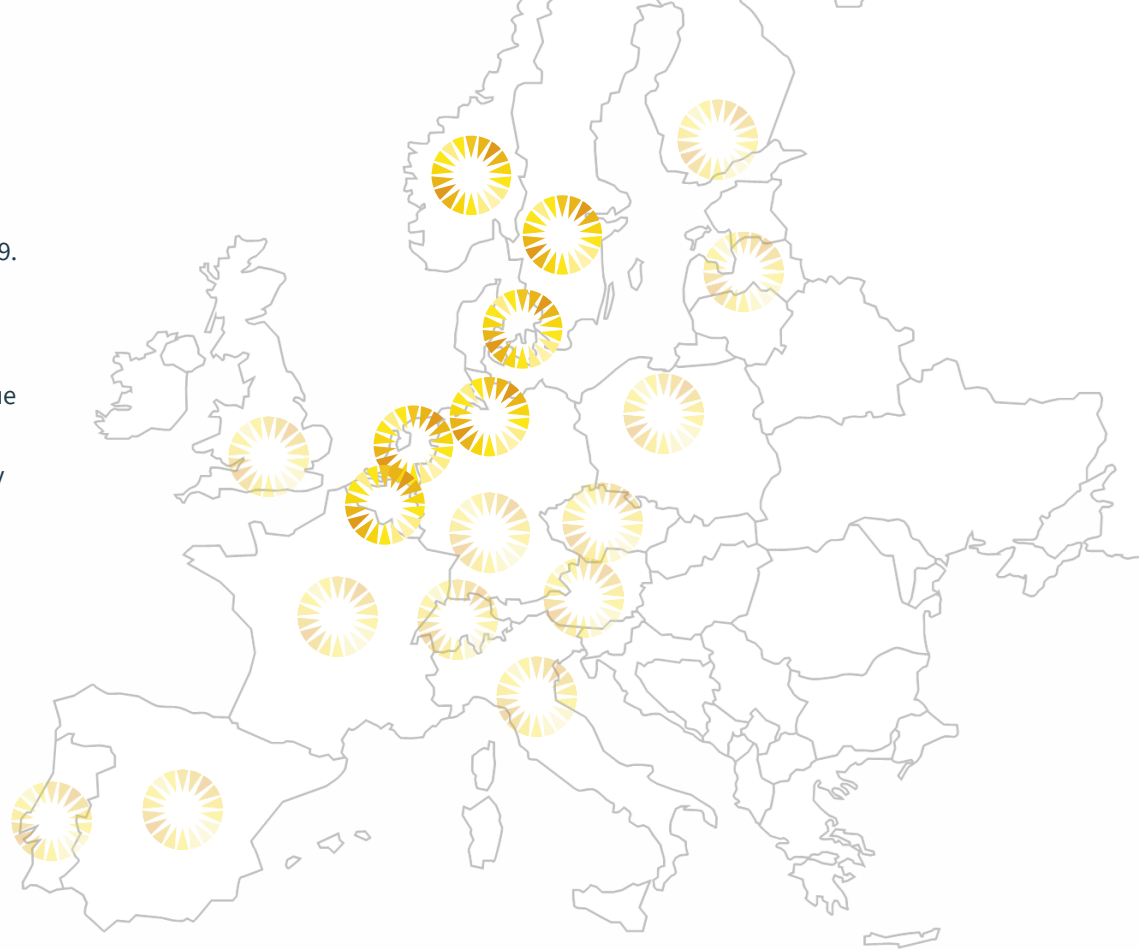
Everfuel 

” **Hydrogen is the new
heavy-duty fuel!**
10% cheaper, 110% cleaner

~~Diesel~~ → **Hydrogen**

Everfuel

- ❑ Everfuel is established in 2017 and spin-off from Nel in Aug-19.
- ❑ Experience with hydrogen business since 2003
- ❑ 20% owned by Nel, 80% by EF Holding
- ❑ Everfuel will convert surplus renewable energy into high value hydrogen fuel, distribute and dispense it.
- ❑ Everfuel will setup the H2 value chain from renewable energy to dispensing of hydrogen for heavy duty vehicles.
- ❑ Everfuel has Office in Herning, Denmark and will be ready to serve customers with hydrogen from 2020.
- ❑ Everfuel expect to setup business across EU before 2025.
- ❑ Everfuel will setup Ambitious projects & partnerships across Europe, starting in Denmark.



Everfuel 

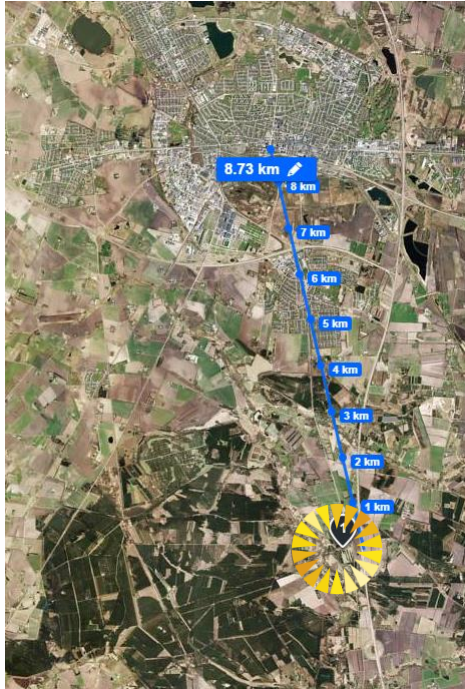


Everfuel 

Everfuel Headquarter needs

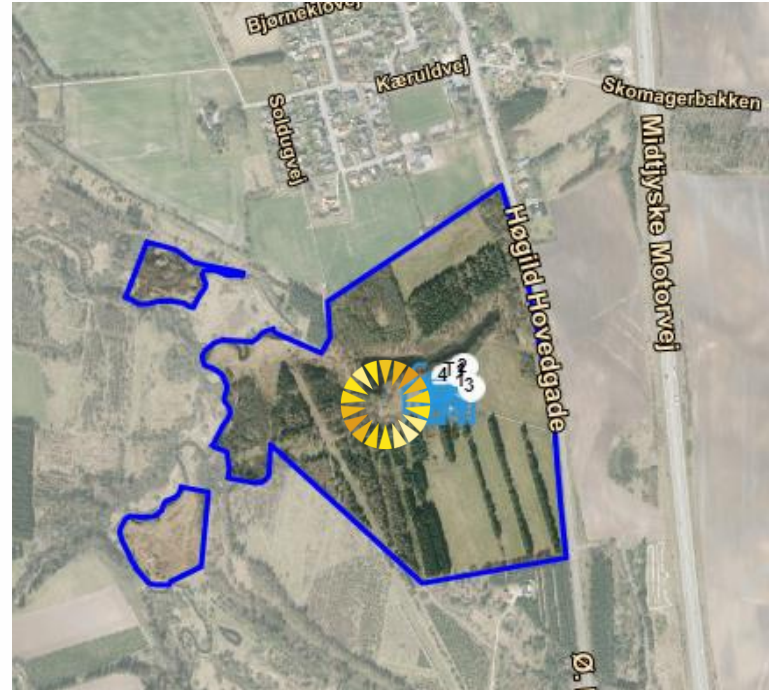
- ❑ Everfuel is developing its headquarters in Høgild south of Herning
- ❑ Everfuel has 5 employees in Jan-2020 and expect to have 12-15 by end of 2020 and 30 employees in Høgild by 2022. Remaining employees are expected to be employed local at Everfuel facilities in Denmark and abroad. Potentially Everfuel will need to build more office space in 3-5 years.
- ❑ Employees in Høgild will mainly be management, sales, business & technology development.
- ❑ Everfuel are not planning to have manufacturing in Høgild, but it would be required to have possibility to make prototyping, tests and demonstration of Everfuel products. Test will include stationary hydrogen storage and storage in hydrogen trailers.
- ❑ Everfuel already today have many visitors from all over the world, and this is expected to increase even further. The Everfuel Farm should be a location guests remember.
- ❑ Everfuel have employees with 2hours driving distance to Høgild. These employees will typically stay 1-2 nights pr week in Høgild. Everfuel plan to establish a guesthouse in the oldest building.
- ❑ Everfuel will make the visit to “Everfuel Farm” to a unique experience for employees and guests.
 - ❑ Bring the beautiful nature into the office. Rebuilding the Farm to include the views from most areas of the building. Beautiful surroundings stimulates innovation. Establish trails in the area and outdoor simple meeting opportunities in the nature.
 - ❑ Demonstrate the hydrogen value chain. Solar → Electrolyser → H2Station.
 - ❑ Potentially make the farm self-sustained by only using energy produced by own solar for the office power and heat, and H2Station for own fleet of fuel cell vehicles.
 - ❑ All changes will be made with respect for the nature and wildlife.

Everfuel Headquarter location



8 km south of
Herning.
30min north of
Billund
international
airport.

30ha farm with
20ha forest and
10ha farming land.
750m² office
space.



Everfuel Farm

Everfuel farm will be fully sustainable and energy self sufficient with energy production both for the electricity, heat as well as for transportation
We will have the farm open for the public from time to time.

Bridge

Guest house

Pavilion

Main building

Flags

Solarpark
0,5 - 1MW



Existing tennis court



Potential building



H2Station

Test building

Test area

Sign

Upgraded road





**Let's make
Hydrogen happen**

Everfuel 